

# THE HAMPTON

**2,600 SQUARE FEET**

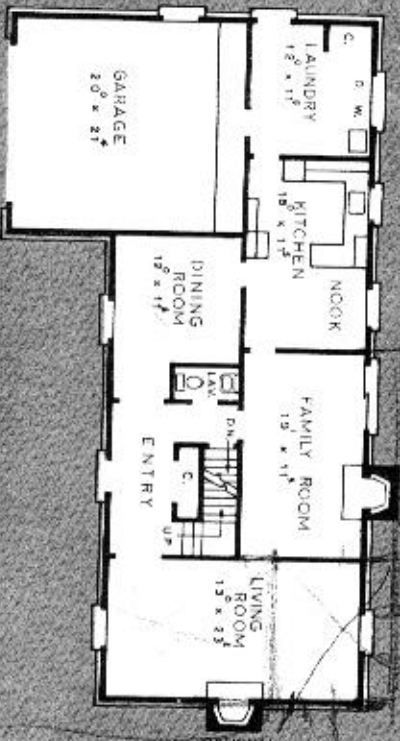
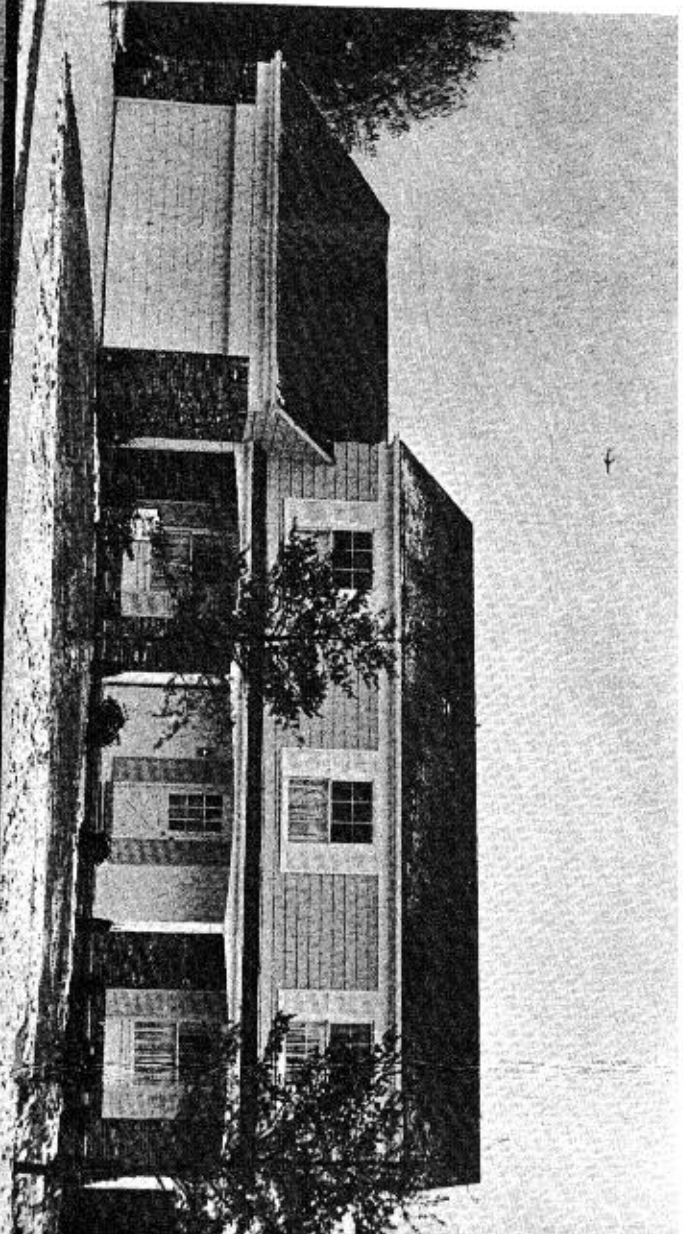
CHOICE OF 20 EXTERIOR FRONT DESIGNS

- 4 Bedrooms (5th or 6th Bedroom Optional Extra)
- Basement
- 1st Floor Laundry Room
- 2½ Baths
- 2 Linen Closets
- 2 Car Attached Garage
- Fireplace
- Pegged Oak Floor in Family Room
- Indirect Lighting in Family Room
- Island Serving Counter in Kitchen
- Choice of Beamed I.R. or F.R. Ceiling
- Closer in Laundry/Mud Room
- 154 Sq. Feet of Closer Space
- 27' Long Master Bedroom Suite
- Walk-in Closer in Master Bedroom
- Landscaping
- G. E. Dishwasher, Refrigerator, Oven, Range and Disposal
- Aluminum Screens
- Winner of McCall's Award

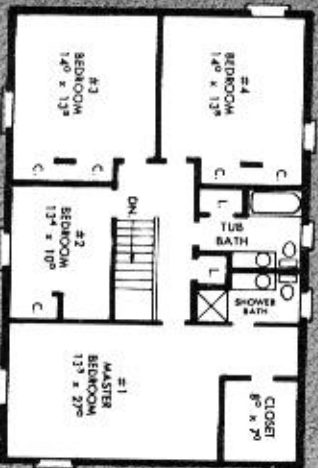
**\$ 4 5 4 5 0**

**INCLUDING BASE LOT**

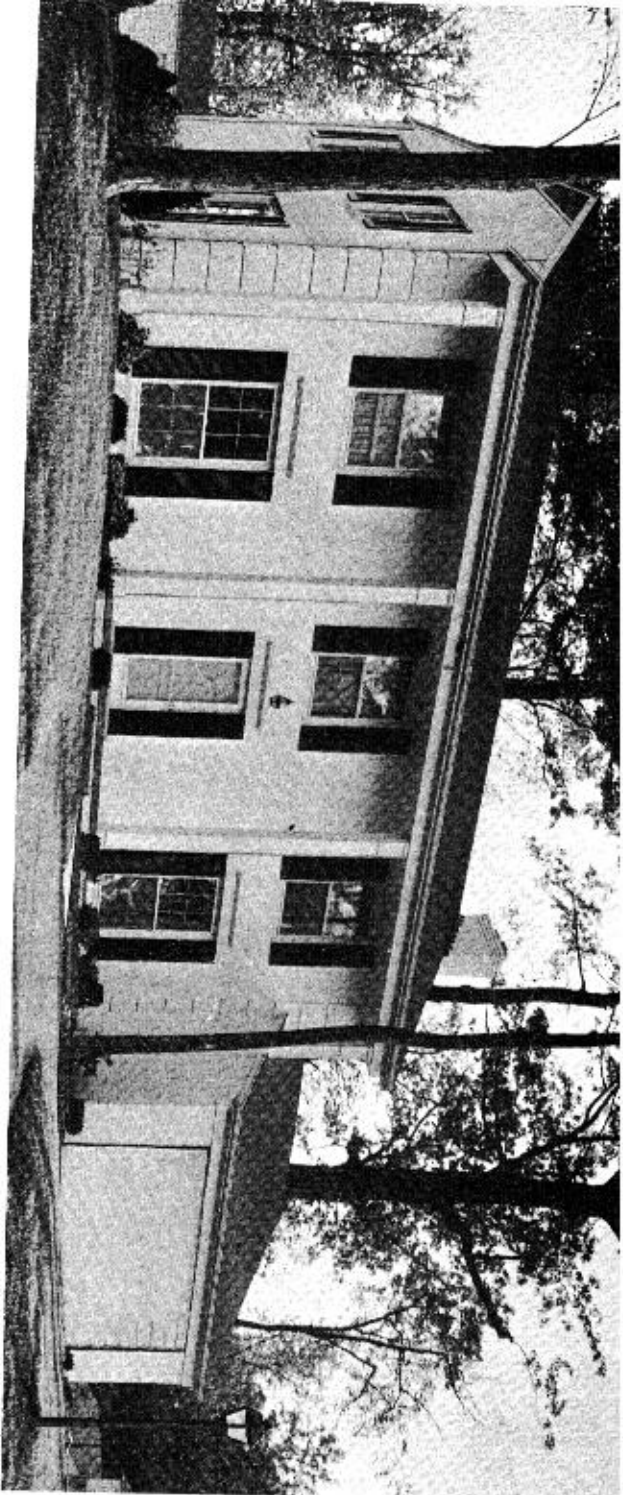
Larger Deluxe Model with All-Brick Front and Side available as Optional Extra



**FIRST FLOOR**



**SECOND FLOOR**



**\$45,950**

**INCLUDING BASE LOT**

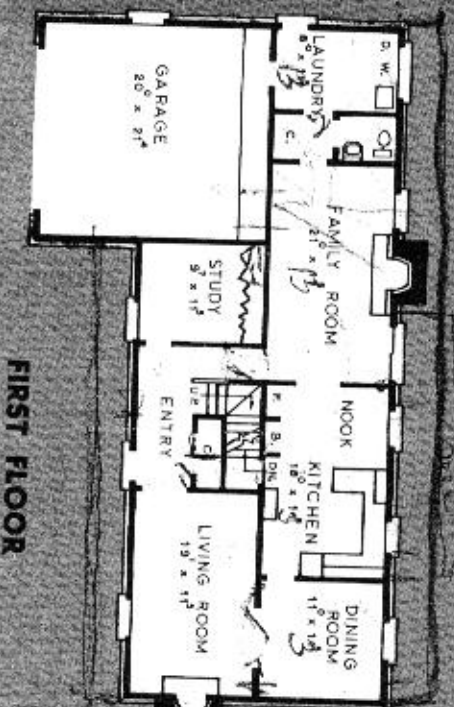
Larger Deluxe Model (as per sample) with extended All-Brick Front and Side available as Optional Extra

# THE WILLIAMSBURG

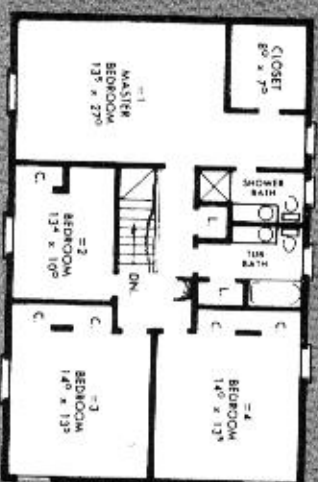
**2,600 SQUARE FEET**

CHOICE OF 20 EXTERIOR FRONT DESIGNS

- 4 Bedrooms (5th and 6th Bedroom Optional Extra)
- 2½ Baths
- Basement
- Large 1st Floor Laundry Room
- 1st Floor Study or Guest Room
- Extra Large Family Room
- 166 Sq. Ft. of Closer Space
- Beamed Ceiling in Family Room
- 2 Car Attached Garage
- Fireplace
- G.E. Dishwasher, Refrigerator, Oven, Range and Disposal
- Pegged Oak Floor in Family Room
- Pantry in Kitchen
- Kitchen Broom and Storage Closer
- Closer in Laundry Room
- Walk-in Closer in Master Bedroom
- Large Hearth in Family Room
- 27' Long Master Bedroom Suite
- 2 Linen Closets
- Aluminum Screens
- Landscaping
- 1964-65 Winner of McGall's Congress on Better Living Award!



FIRST FLOOR



SECOND FLOOR

915.02

921.000  
775.00  
915.02

# THE NANTUCKET

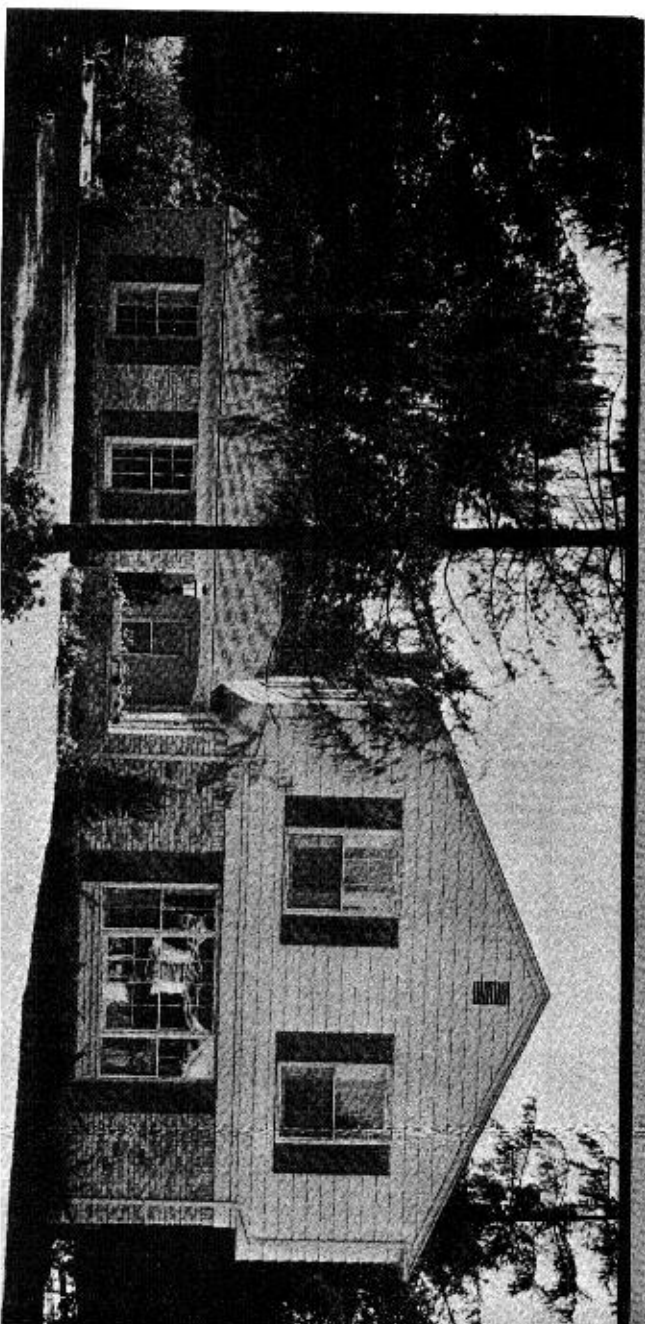
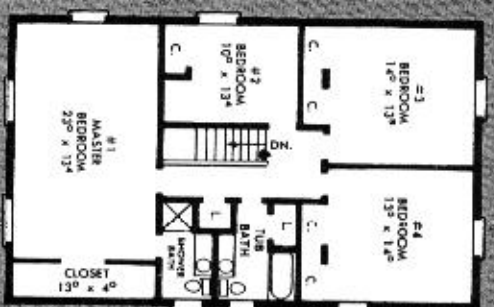
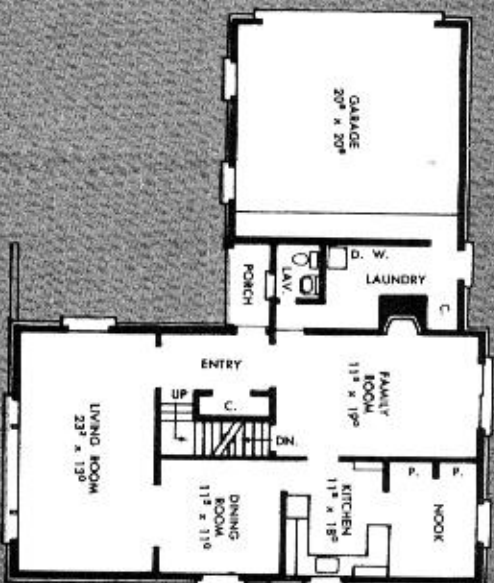
2,550 SQUARE FEET

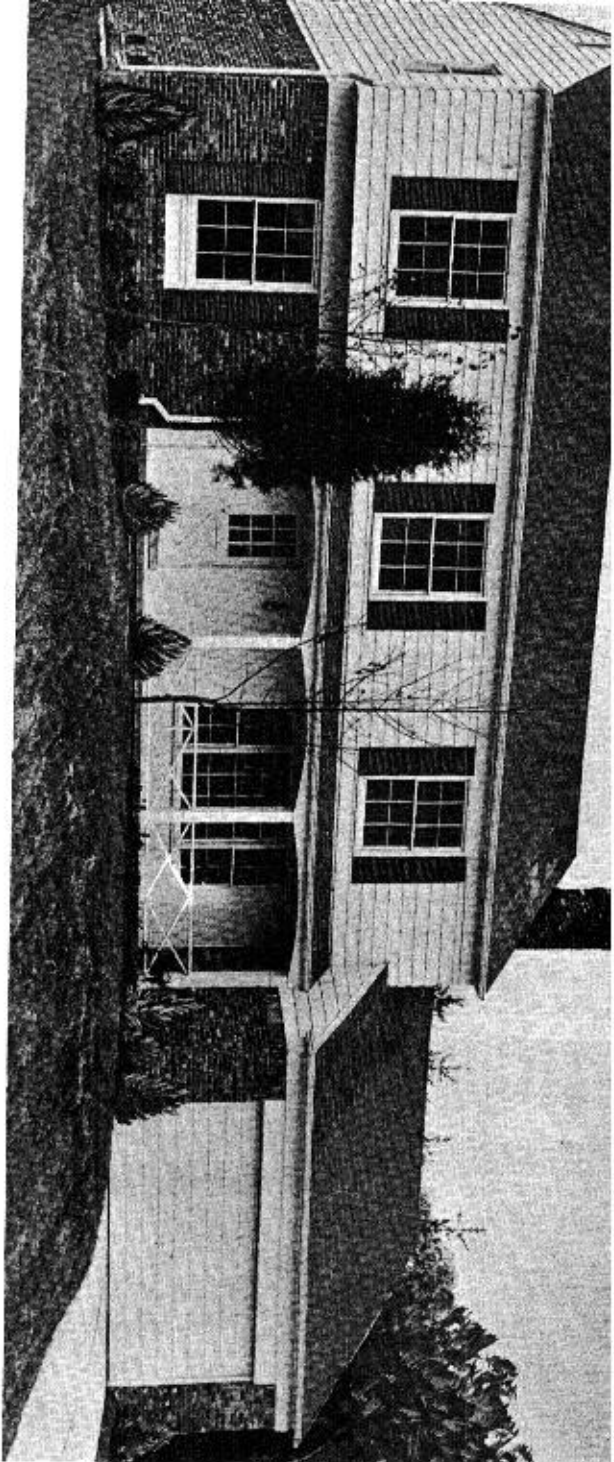
CHOICE OF 3 EXTERIOR FRONT DESIGNS

- 4 Bedrooms (5th Bedroom Optional Extra)
- 2½ Baths
- Basement
- 1st Floor Laundry Room
- Side Entrance Garage
- 145 Sq. Ft. of Closer Space
- Choice of Beamed Living Room or Family Room Ceiling
- Fireplace
- Indirect Lighting in Dining Room
- Island Serving Counter in Kitchen
- Closer in Laundry/Mud Room
- 27' Long Master Bedroom Suite
- Walk-in Closer in Master Bedroom
- 2 Linen Closets
- Landscaping
- 2 Car Attached Garage
- G.E. Dishwasher, Refrigerator, Oven, Range and Disposal
- Twin Pantries in Kitchen
- Pegged Oak Floor in Family Room
- Aluminum Screens
- Award Winner and Featured in McCall's Magazine

**\$45,450**

INCLUDING BASE LOT





# THE MAXWELL

**2,500 SQUARE FEET**

CHOICE OF 20 FRONT EXTERIOR DESIGNS

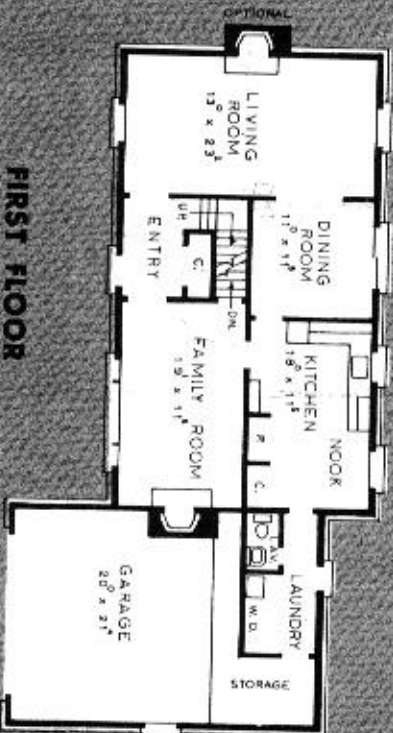
- 4 Bedrooms (5th and 6th Bedroom Optional Extra)
- 2½ Baths • Basement
- 1st Floor Laundry Room
- 150 Sq. Feet of Closer Space
- Pegged Oak Floor in Family Room
- Choice of Beamed L.R. or F.R. Ceiling
- Pantry in Kitchen plus Storage Closer
- Indirect Lighting in Dining Room
- Walk In Closer in Master Bedroom

- 27' Long Master Bedroom Suite
- 2 Linen Closets
- Landscaping
- Fireplace
- Aluminum Screens
- G.E. Dishwasher, Refrigerator, Oven, Range, Disposal
- 2 Car Attached Garage
- Winner of McCall's Award

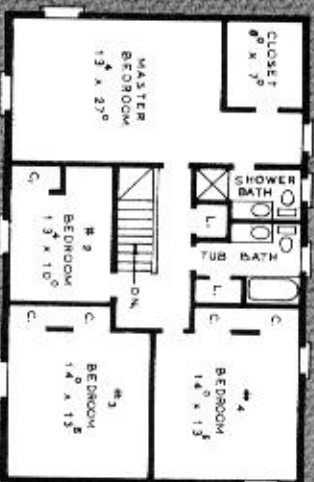
**\$44,450**

**INCLUDING BASE LOT**

Larger Deluxe Model with All-Brick Front and Side Available as Optional Extra



**FIRST FLOOR**

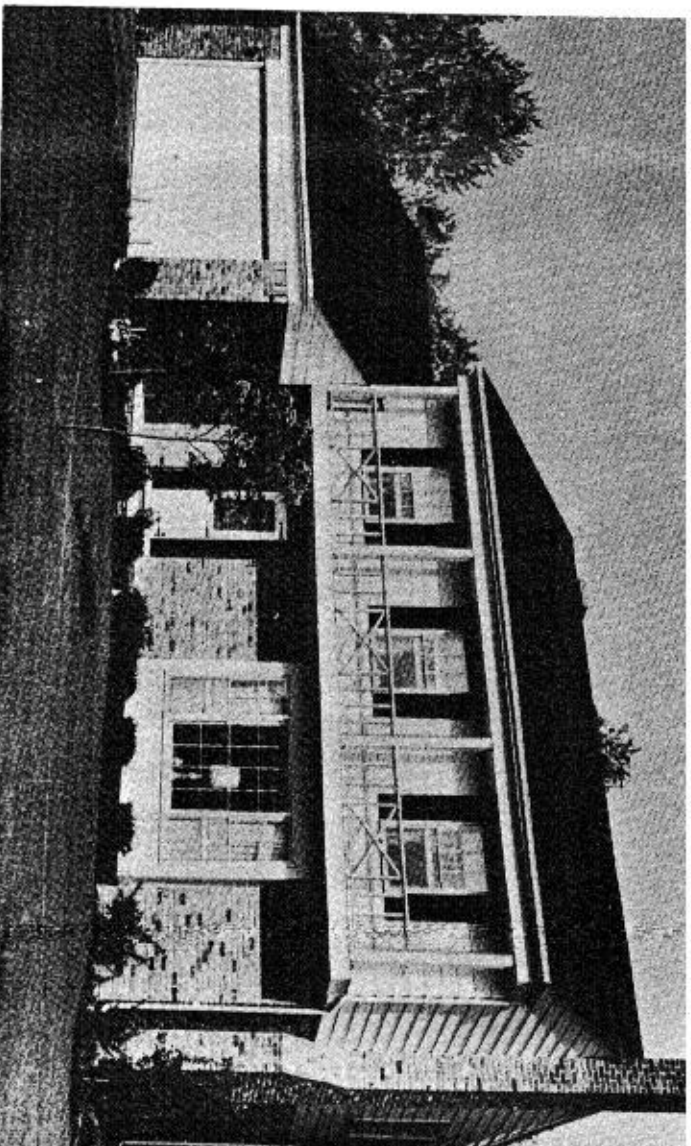


**SECOND FLOOR**

# THE BLAIR

## CHOICE OF 12 FRONT EXTERIOR DESIGNS

- Choice of 3 or 4 Bedrooms
- 2½ Baths
- Attached Two Car Garage
- Vinyl Asbestos Floor in Family Room
- Twin Size Bedrooms
- 100 Sq. Feet of Closer Space
- 33' Long Master Bedroom Suite in Deluxe Model
- Aluminum Screens
- Landscaping
- G.E. Dishwasher, Refrigerator, Oven, Range and Disposal

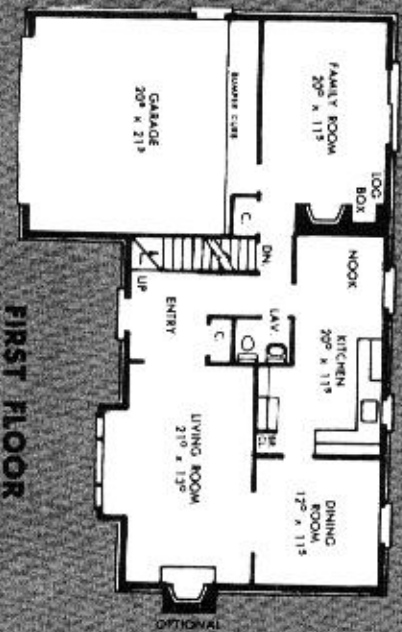


- This house was featured in McCall's Magazine and 8,000 letters were received from around the country requesting plans for this model!

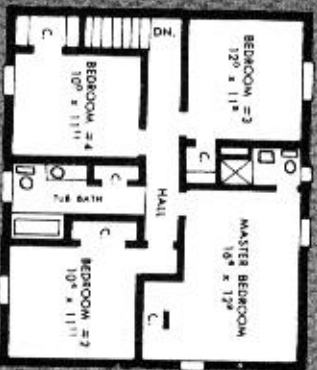
**\$41 950**

**INCLUDING BASE LOT**

Larger Deluxe Model with All-Brick Front and Side Available as Optional Extra



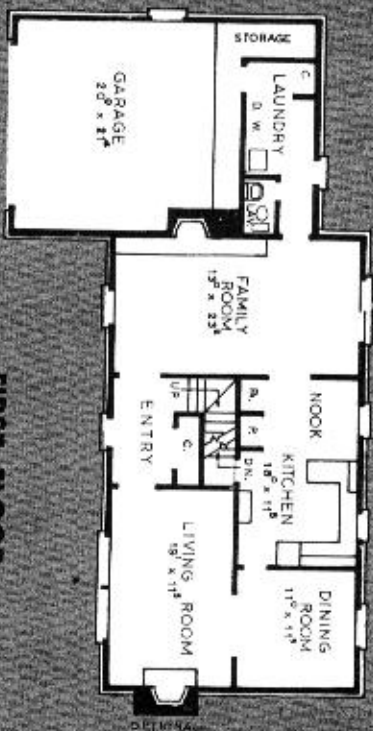
**FIRST FLOOR**



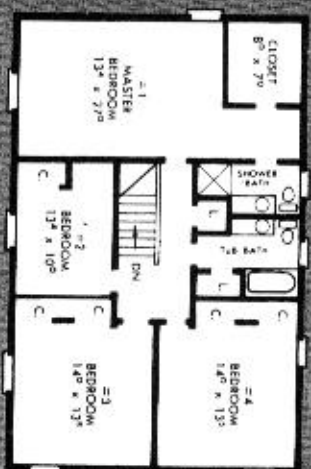
**STANDARD  
SECOND FLOOR**



**ALTERNATE  
3 BEDROOMS—2nd FLOOR  
WITH OPTIONAL 4th BEDROOM**



FIRST FLOOR



SECOND FLOOR

- 4 Bedrooms (5th and 6th Bedroom Optional Extra)
- 2½ Baths
- Basement
- 1st Floor Laundry Room
- Fireplace
- Extra Large Family Room
- 150 Sq. Ft. of Closer Space
- Beamed Ceiling in Family Room
- Attached 2 Car Garage
- Landscaping
- G.E. Dishwasher, Refrigerator, Oven, Range and Disposal
- Pegged Oak Floor in Family Room
- Pantry in Kitchen
- Kitchen Broom and Storage Closer
- Closer in Laundry Room
- Walk-in Closer in Master Bedroom
- Large Hearth in Family Room
- 27' Long Master Bedroom Suite
- 2 Linen Closets
- Aluminum Screens
- Winner of McCall's Congress on Better Living Award!

# THE GEORGETOWN

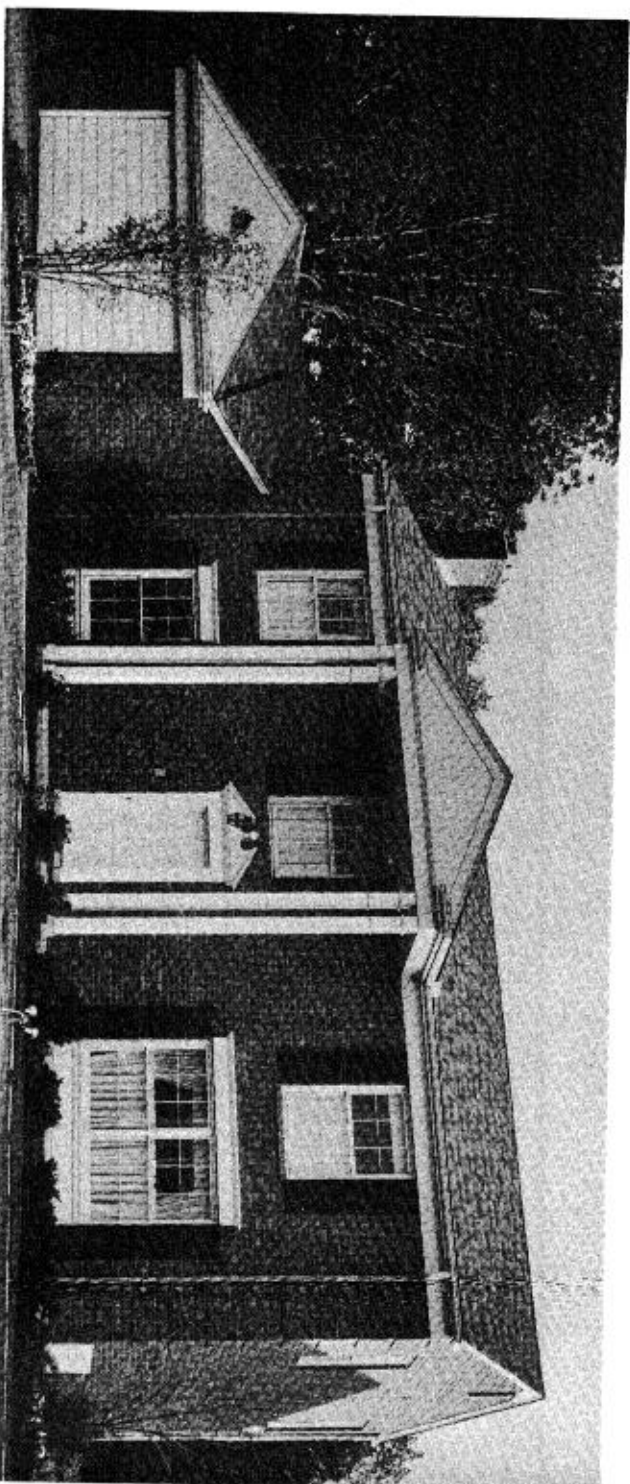
2,550 SQUARE FEET

CHOICE OF 20 EXTERIOR FRONT DESIGNS

**\$44,950**

**INCLUDING BASE LOT**

Larger Deluxe Model (as per sample) with extended All-Brick Front and Side available as Optional Extra



# 6 NATIONAL AWARD

## WINNING DESIGNS

1961, 1962, 1963, 1964 and 1965  
WINNER OF MCCALL'S  
MAGAZINE AWARDS

*The Blair and Nantuxet houses  
have been featured in  
McCall's Magazine.*

## FEATURES . . .

### CONSTRUCTION

- Poured Concrete Basements
- Wood Double Hung Windows
- Copper Plumbing
- Silent Light Switches
- "American Standard" Plumbing Fixtures
- "Formica" Counter Tops
- "Alside" Aluminum Siding (maintenance free)
- "Owens Corning" Fiberglass Insulation
- Hardwood Oak Floors—Living Room, Dining Room and Entire 2nd Floor
- "Armstrong" Lifetime Vinyl Floor Covering

### CONSTRUCTION

- "Ruberoid" Asphalt Roof Shingles
- "American Standard" Shower Mixing Faucets
- Fiberglass Laundry Tub
- 50 Gallon Glass Lined Water Heaters
- "Pittsburgh Plate" Glass Mirrors
- Prewired for Telephones
- "G.E." Appliances
- Termite Protection
- Vermont Slate Foyer Entrances

## INFORMATION

### KITCHEN

- "G.E." Oven, Range, Dishwasher, Refrigerator, and Disposal
  - "Formica" Counter Tops
  - Chair Rail in Dining Room & Breakfast Nook
  - Stainless Steel Sink
  - Marble Window Sill
  - "Armstrong" Vinyl Floor Covering
- ### BATHS
- Built-In Vanity W/"Pittsburgh Plate Glass" Mirror
  - Built-In Louvered Medicine Cabinets

- "American Olean" Ceramic Tile Showers & Floors
- "National" Glass Shower Doors
- Cast Iron Round Wash Basins
- Choice of Colored Fixtures in Tub or Shower Bath
- Leak & Stain Proof Shower Floors
- Vent Fans in Powder Rooms
- "American Standard" Shower Mixing Faucets
- Cast Iron Bath Tubs
- "Formica" Vanity Tops

### FAMILY ROOMS

- Pre-Finished Panelling in Family Room
- Sliding Glass Terrace Doors
- Pre-Finished "Bruce" Pegged Oak Flooring

- (Vinyl Asbestos Floors in Family Room of Blair House)
- Choice of Fireplace in Family Room or Living Room

### GARAGES

- 2 Car Finished Garages With Overhead Storage
- Bumper Curbs W/Storage Decks
- "Berry" Steel Garage Doors
- Concrete Driveways

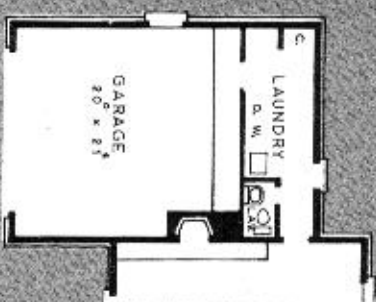
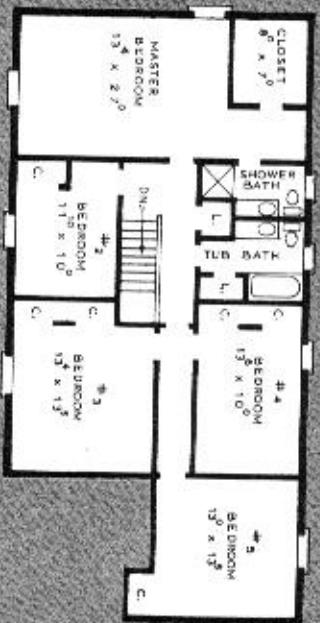
### CLOSETS

- 2 Storage Shelves in Every Closet
- Warp Free Metal Clothes Poles
- Louvered Doors on Foyer Closets

*... Pulite Built means Better Built*



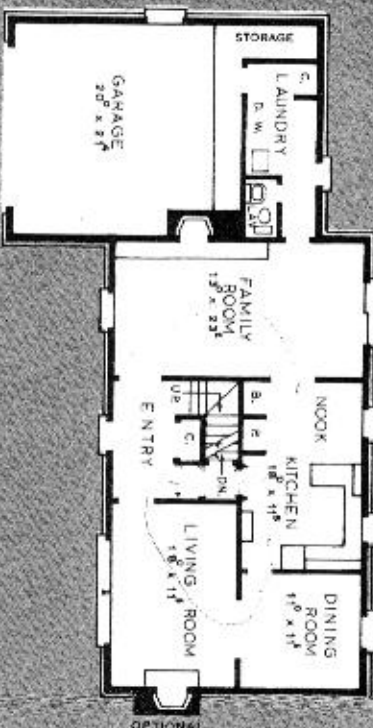
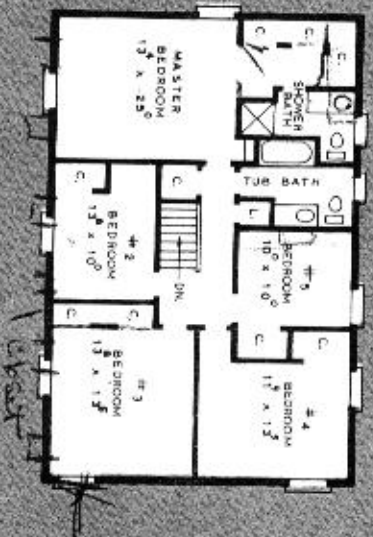
# ALTERNATE FLOOR PLANS *(Optional Extra)*



5th Bedroom over Laundry and Garage Area

GEORGETOWN and WILLIAMSBURG (Plan also available for Hampton and Maxwell)

GEORGETOWN  
EXTENDED LAUNDRY ROOM



Revised 2nd Floor with 5th Bedroom  
GEORGETOWN, HAMPTON, WILLIAMSBURG, MAXWELL

GEORGETOWN  
CENTER HALL TO KITCHEN

• Ask sales representative for complete details.